



SEPTIEMBRE 2021

FOR GENDER-EQUAL CLIMATE ACTION WITH GENDER EQUALITY



Funded by
the European Union



Funded by
the European Union



NACIONES UNIDAS
CHILE



THE GOVERNMENT
OF THE GRAND DUCHY OF LUXEMBOURG
Ministry of the Environment, Climate
and Sustainable Development



COP25 CHILE 2019 | UN CLIMATE CHANGE CONFERENCE



SEPTIEMBRE 2021

Climate finance with a gender perspective



Funded by
the European Union



Financiado por
la Unión Europea



NACIONES UNIDAS
CHILE



THE GOVERNMENT
OF THE GRAND DUCHY OF LUXEMBOURG
Ministry of the Environment, Climate
and Sustainable Development

Tuesday
September 21

10:00 - 11:30
Chilean time

Live streaming on YouTube
by the Ministry of the
Environment of Chile (Spanish)
and EUROCLIMA+ (English)

CLIMATE FINANCING WITH GENDER PERSPECTIVE

MESSAGE



PEARNEL CHARLES JR.

Minister of Housing, Urban Renewal,
Environment & Climate Change of Jamaica;
readiness proposal design process to the
Green Climate Fund

PANELISTS



MARÍA ELENA HERRERA

National Forestry Financing Fund, Ministry of
Environment & Energy of Costa
Rica. Women+ Nature Program, on access to
microcredit.



EMILIA REYES

Executive Program Director: Gender Equity:
Citizenship, Work and Family.

PRESENTED BY



NINA KOLYBASHKINA

Senior Social Development Specialist, Climate
Investment Funds.

MODERATOR



MARINA CASAS

Climate Change and Gender Equality Advisor,
Climate Change Unit, Sustainable
Development and Human Settlements
Division, ECLAC.

Objective of the session

- Exchange and discuss experiences in the international, public and private climate change financing sector aimed at integrating gender considerations and facilitating access to funds.
- Identification of opportunities to facilitate access to international climate funds according to type of beneficiaries.



SEPTIEMBRE 2021

Session Moderator:

Marina Casas

Gender Specialist, Economics of Climate Change Unit of the Sustainable Development and Human Settlements Division of the United Nations Economic Commission for Latin America and the Caribbean (ECLAC).



On climate finance

To address the three crises, the redesign of policies, technical, human and financial resources, as well as multilateral and inter-country cooperation, is necessary.

- Progress has been made by the operational entities of the UNFCCC Financial Mechanism and other climate funds to integrate gender considerations into the programming guidelines and structures of the funds.
- It is key to systematically integrate a gender approach so that climate finance favors gender equality and women's empowerment.
- It is important to achieve a fiscal transition that is in line with the ecological transition and that ensures women's access to the fiscal solutions of this transition even in contexts of fiscal consolidation and adjustment.



SEPTIEMBRE 2021

Gender transformative approaches in climate finance – experience of Climate Investment Funds (CIF)

Nina Kolybashkina

Senior Social Development Specialist
Climate investment funds



What is the CIF?

Established in 2008 with **USD 8.5 billion** as one of the largest fast-tracked multilateral climate funds in the world.

Concessional finance is a strategic tool to unlock capital - provides developing countries with a needed jump-start toward achieving low-carbon and climate-resilient development in partnership with six Multilateral Development Banks:



WORLD BANK GROUP

THE WORLD BANK
IBRD • IDA

IFC
International
Finance Corporation

In numbers

74

INVESTMENT
PLANS

322



IN 2020:

39

TOTAL PROJECTS

29

Results

CIF CO-FINANCING

\$7.5 B

CIF APPROVED
FUNDING

1:8.1

LEVERAGE RATIO

\$61 B

EXPECTED
CO-FINANCING

26.6 GIGAWATTS
IN CLEAN POWER
CAPACITY
WORLDWIDE AND
11,037
GIGAWATT-HOURS
OF ENERGY
SAVED



BROADER ENERGY ACCESS
FOR 10 MILLION PEOPLE



STRENGTHENED
CAPACITY OF 45
MILLION PEOPLE
TO COPE WITH
CLIMATE CHANGE

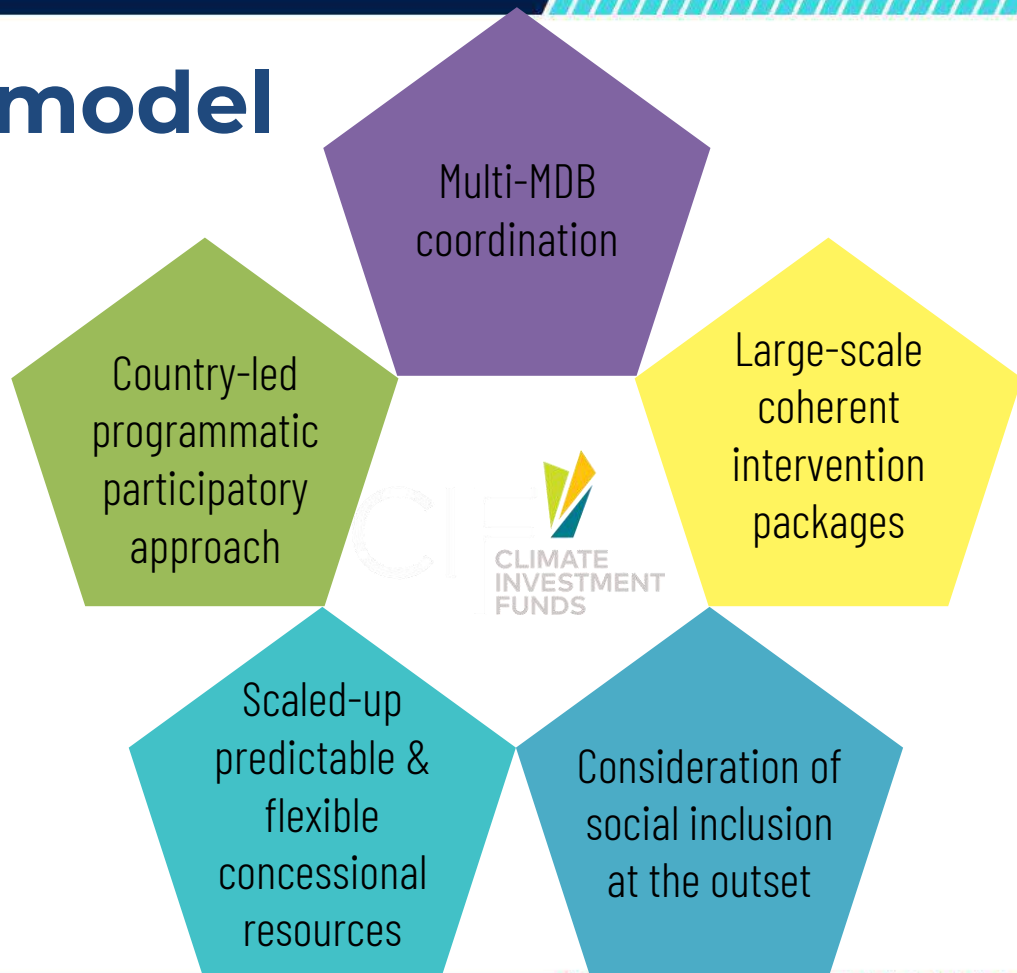


44.7 MILLION HECTARES
OF SUSTAINABLE FORESTS

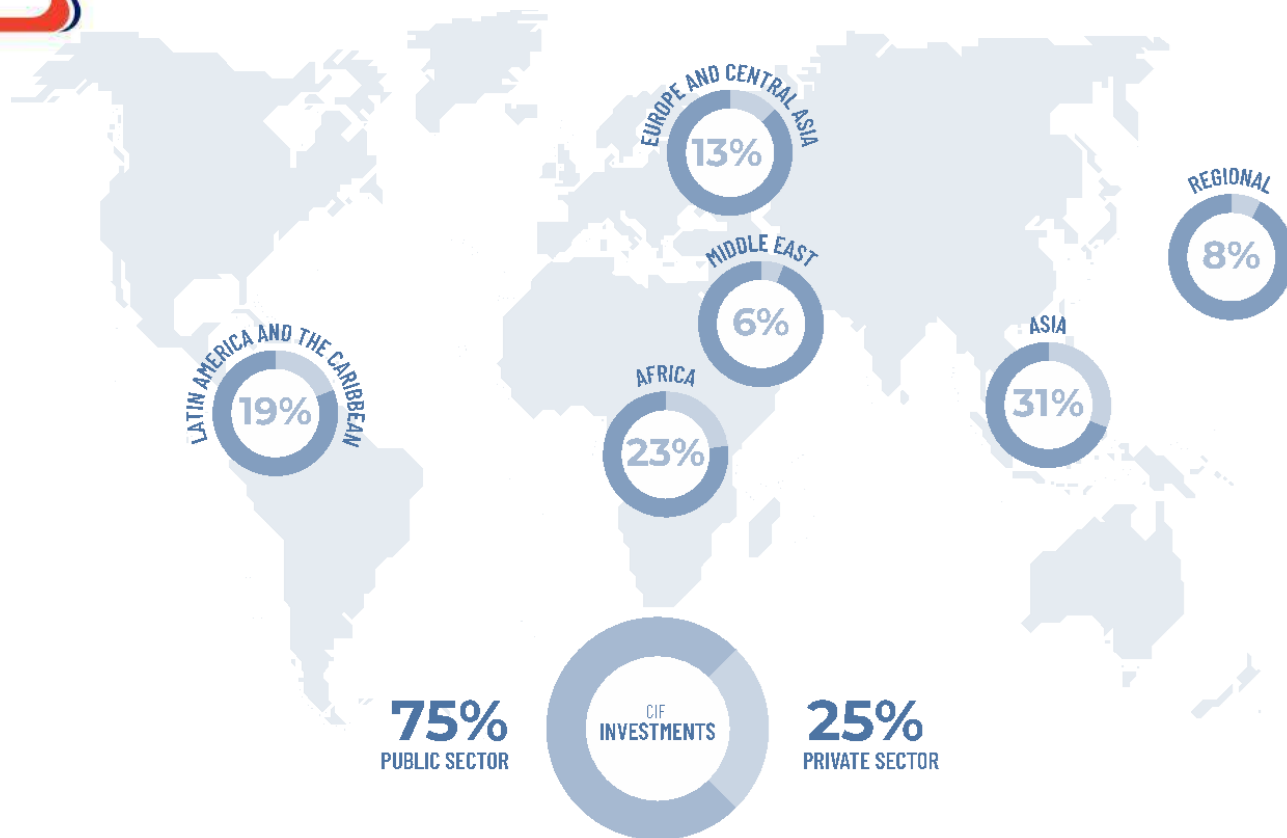
300+ PROJECTS IN 72 COUNTRIES

Business model

CIF's **comparative advantage** resides in the unique features of its **business model**



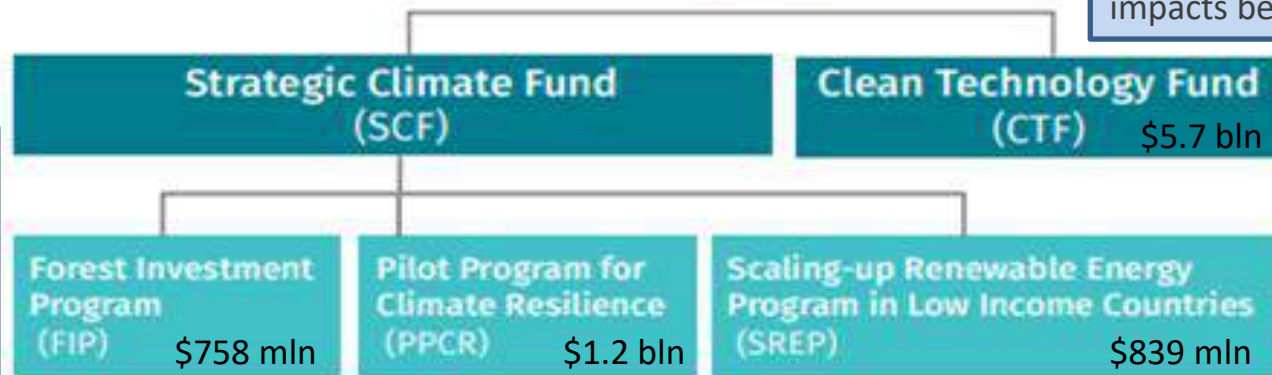
Worldwide investments



On-going programs



Large-scale projects in RE, EE and Transport: distributional impacts beyond safeguards



Benefit-sharing, tenure security and forest-based livelihoods, with focus on Indigenous People

Institutional development and community-level impacts

Focus on investments with local impact – off grid and RE small enterprises

CIF Financing and Portfolio in LAC

23% Overall CIF
share of financing in LAC

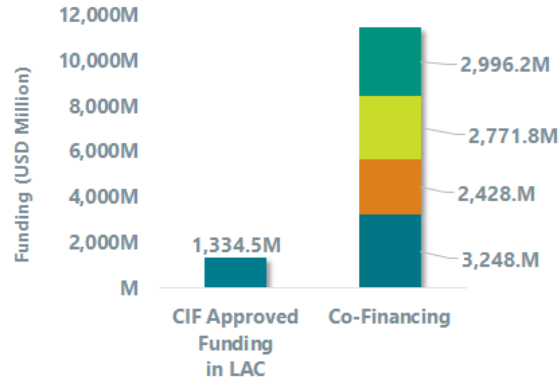
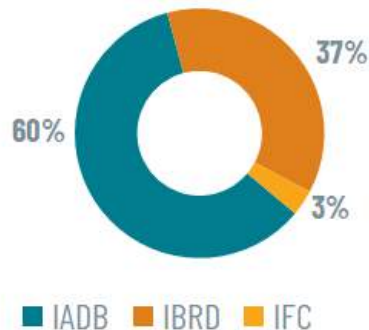
77% Public sector
23% Private sector

\$1.3 B
CIF-Approved

97 Projects in
16 countries

96% Projects under
implementation

CIF
Approved
funding by
MDB in LAC
Region



Co-Financing
Breakdown

■ Bilateral and Others
■ Government
■ MDB
■ Private Sector

New action programs



**Renewable Energy
Integration**

**Climate Smart
Urbanization**

Industrial Decarbonization

Nature, People & Climate

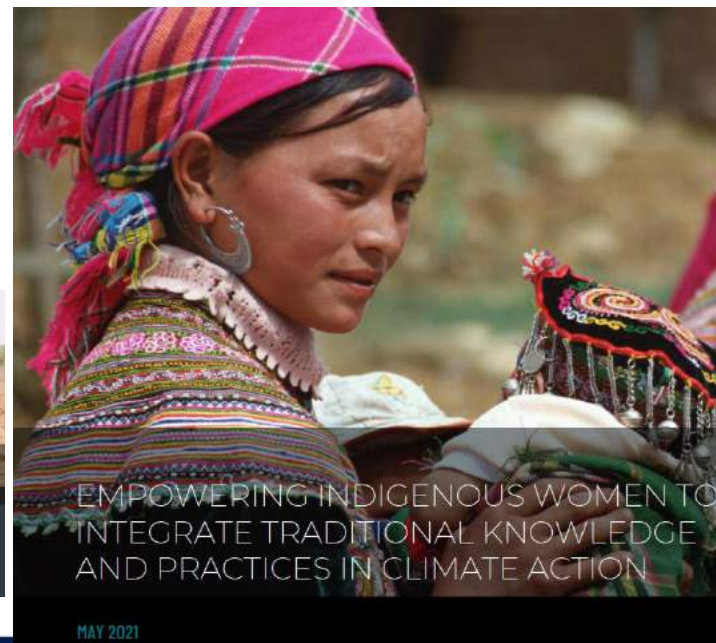
Energy Storage

Accelerating Coal Transition

**CIF COVID-19 Response
Window**

Climate finance learning laboratory

- **Green Recovery**
 - **Development Impacts**
 - **Transformational Change**
 - **Just Transitions**
- Roles of traditional knowledge in mitigation and adaptation strategies, particularly the role of Indigenous Women



CIF Gender Policy and Procedures

- **CIF Gender Policy (2018)**, “Gender equality efforts are central to CIF’s goal of transformational change for reasons of efficiency, effectiveness, and for goals of development impact, gender equity, and social inclusion”
- **Gender Action Plan Phase 3 (FY21-24)**: gender-transformational change as women’s improved asset position, voice, and livelihoods status, as well as increased participation of women in markets and institutions
- **Gender score card**: analysis, gender disaggregated indicators and women-targeted activities
- **Gender team upstream review** at project preparation stage

Gender-Transformative Impacts

...improved asset position, voice and livelihood status of women

Local and National Institutions

- Women's leadership, skill and mobility opportunities
- Inclusive resource governance
- Participatory resilience planning
- National gender mainstreaming mechanisms (gender focal points, gender budgeting)

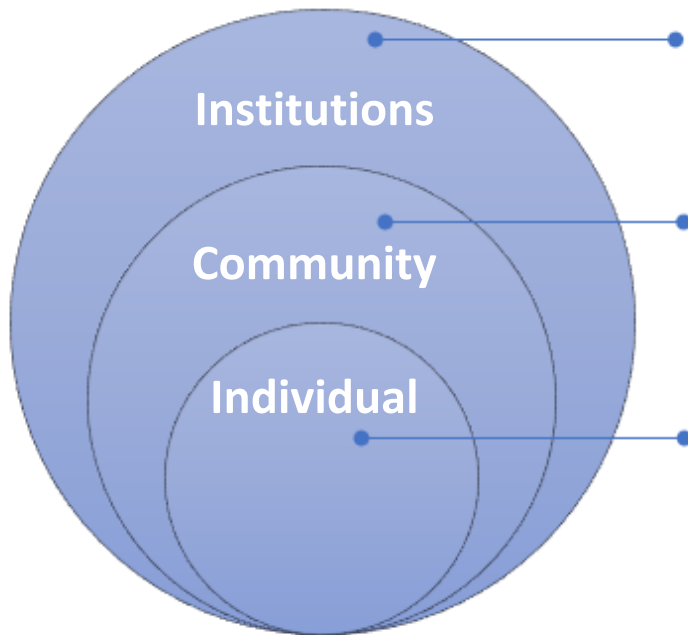
Green Growth and Sustainable Livelihoods

- Energy access
- Renewable Energy sector employment
- Inclusive transport
- Disaster risk reduction
- Agricultural productivity, water and food security
- Productive landscapes
- Tenure security
- Climate-health nexus

CIF-wide and Program Governance

- CIF policy requirements
- Gender-inclusive country ownership support
- Gender technical support
- Representation of women's interests
- South-South learning on gender integration
- Gender-sensitive M&E

Transformational change



Gender-responsive policies and institutions, women's leadership in formal institutions, shifting gender norms

Women's effective participation in community-level decision-making mechanisms

Improved:

- **Asset position** (i.e. land use and rights, tenure, access to credit)
- **Access to services** (i.e. energy, transport, water, agriculture, hydrometeorological, social protection, child care)
- **Skills development and capacity building** (i.e. sector-specific, livelihood development, STEM specific, financial literacy)
- **Employment and income levels** (i.e. temporary/informal, formal/skilled)

CIF Portfolio Performance on Gender

	Gender Action Plan (GAP) Baseline 2014 % (n)	From inception – to December 2020 % (n)
No. (and %) of CIF projects, with gender analysis	54% (71)	61% (187)
No. (and %) of CIF projects, with women-targeted activities	54% (71)	69% (212)
No. (and %) of CIF projects with sex-disaggregated M&E indicators	46% (61)	54% (166)
Total no. of projects approved	132	309

Best practices on gender from LAC

CIF's investments in forestry sector in Mexico

\$ 687.02 mln (total); 66.0 (CIF), 4 projects since 2011, IDB and WB,

- Coordinated, multi-level efforts to strengthen policy, institutional, social, and market capacities
- Support value chains through smaller-scale investments in climate goods and services

Gender dimensions:

- **Training and capacity building** on gender CONAFOR (Comisión Nacional Forestal), dedicated funding window for productive activities by women
- **Behaviorally-informed communication** on women's role in natural resource management
- **Training women** as local community promoters
- **New jobs**, including leadership positions for women in male-dominated forestry sector
- **Gender-sensitive evaluation** criteria for grant projects under DGM to ensure funding for (47 of 55 sub-projects women-led)

FIP Dedicated Grant Mechanism (DGM)

- **Indigenous Peoples and Local Communities (IPLCs) are the most effective guardians of the world's forests.**
- DGM is a unique program designed and led directly by IPLCs. It provides dedicated resources to build IPLCs' capacity and elevate their voices in local, national, and global climate action.



\$80 million invested

Projects in **9 countries** +
3 pending approval

Over **580+ subprojects**
benefitting **237,848 community members** across seven
countries.

167,881 ha of land covered

24%

OF ALL SUBPROJECTS
HAVE BEEN AWARDED
TO WOMEN-LED
INITIATIVES AND WOMEN
REPRESENTATIVES

25%

OF ALL NATIONAL STEERING
COMMITTEE MEMBERS
ARE WOMEN

DGM support in LAC

Global Project

Global Executing Agency: 
Headquarters: Arlington, VA, USA
Funding: \$5.0 million (Phase I), \$2.3 million (Phase II)
Implementation: April 2015 - December 2022
Global Steering Committee:
12 voting members (8 men/4 women)

Gender inclusion in DGM Peru:

- strategy and training module focused on gender and the environment
- \$500,000 allocated for subprojects proposed or managed mainly by women
- 28 subgrants allocated for women-led projects

Mexico

National Executing Agency: 
Funding: US \$6.0 million
Implementation: October 2017- February 2022
National Steering Committee:
17 voting members (15 men/2 women)



Guatemala

Funding: US\$ 4.5 million
National Steering Committee:
15 voting members

Peru

National Executing Agency: 
Funding: US \$5.5 million
Implementation: November 2015 - March 2021
National Steering Committee:
10 voting members (8 men/2 women)



Brazil

National Executing Agency: 
Funding: US \$6.0 million
Implementation: October 2017- February 2022
National Steering Committee:
17 voting members (15 men/2 women)



New action programs



**Renewable Energy
Integration**



Energy Storage



**Climate Smart
Urbanization**



Accelerating Coal Transition



Industrial Decarbonization



**CIF COVID-19 Response
Window**



Nature, People & Climate

Climate finance learning laboratory

- **Green Recovery**
- **Development Impacts**
- **Transformational Change**
- **Just Transitions**

Recent reports on the role of traditional knowledge in mitigation and adaptation strategies, and particularly the role of Indigenous Women





COP25 CHILE
2019

UN CLIMATE CHANGE
CONFERENCE



CAMBIO
CLIMÁTICO
ENCUENTRO REGIONAL
E IGUALDAD
DE GÉNERO

Questions from the audience



Funded by
the European Union



Financiado por
la Unión Europea



NACIONES UNIDAS
CHILE



THE GOVERNMENT
OF THE GRAND DUCHY OF LUXEMBOURG
Ministry of the Environment, Climate
and Sustainable Development



ENCUENTRO REGIONAL

CAMBIO CLIMÁTICO E IGUALDAD DE GÉNERO

Por una acción climática con igualdad de género



COP25 CHILE 2019

UN CLIMATE CHANGE
CONFERENCE



SEPTIEMBRE 2021

Experiences in the region



Funded by
the European Union

EUROSOCIAL
PROGRAMA PARA LA COESIÓN SOCIAL



Financiado por
la Unión Europea



NACIONES UNIDAS
CHILE



THE GOVERNMENT
OF THE GRAND DUCHY OF LUXEMBOURG
Ministry of the Environment, Climate
and Sustainable Development

Jamaica



Parnel Charles Jr.

Minister of Housing, Urban
Renewal, Environment and
Climate Change of Jamaica.

Readiness proposal design
process

Costa Rica



María Elena Herrera

Technical Coordinator of the National REDD+ Strategy.

Development of Projects for the Commercialization of
Environmental Services, Safeguards, Gender and
Indigenous Peoples.

FONAFIFO - MINAE

Context



Gender Analysis

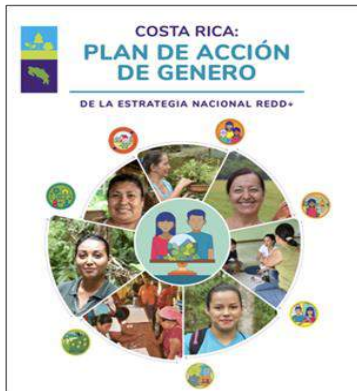


Institutional strengthening and sensitization to promote gender equality



Design of a gender-sensitive benefit-sharing mechanism for the REDD+ Strategy.

Time Line



Construction process of the Gender Action Plan for REDD+.



July 2019, Ministry of Environment and Energy, signed Ministerial Directive No 005-2019.



Reducing gender gaps in the biodiversity sector - water, protected areas and forests - to ensure the equality and contribution of women in this sector.



Strengthening access to financing and women's empowerment.

Objective experience



1. Develop the national policy framework



2. Reducing institutional gender gaps



3. Strengthening access to finance and women's empowerment.



4. Develop a strategy for knowledge management and communication.



5. Consolidate alliances and mobilize resources

Results

Forestry Harvesting Plantation Program (PPAF)

Conditions

- Financing 5 million/project
- Trust guarantee
- Fixed rate of 5%.
- Annual interest payment
- Full amortization with performance-based PSA.
- Thinning and final cut.
- 10-year term

Bloques	
Financing	₡1.500 por árbol
Arrangement	Plantations with 3 x 4 and 4 x 4 meter spacing between trees.



Results

Forestry Harvesting Plantation Program (PPAF)

En hileras con cultivos

Financing **₡2.000** por árbol

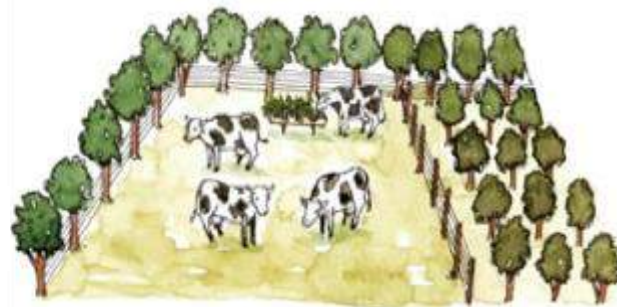
Arrangement Trees in s-rows, fences, crops, recalles. Up to 3 rows



En franjas con ganado

Financing **₡3.500** por árbol

Arrangement trees in strips on land with livestock - up to 3 rows recommended--



FONAFIF
A TU LAD +








CRÉDITO MUJER
RURAL

Results

Target

To favor economic democratization in order to promote economic development and improve the quality of life of rural women.

Financing Conditions

-  - Term up to 10 years
-  - Up to 5 million with fiduciary guarantee
-  - Fixed rate 4%.
-  - Customized form of payment
-  - Sensible requirements

Lines of Financing

-  Product promotion
-  Working Capital
-  Infrastructure
-  Equipment
-  Innovative Projects

Results

FONAFIF
A TU LAD 



PSA MUJER

What does PSA consist of?

The Payment for Environmental Service PES consists of a financial recognition by the State for the services of:

- Carbon sequestration
- Biodiversity and water protection
- As well as the scenic beauty service provided by forests.

Target



Objective: to strengthen women's participation in the Payment for Environmental Services Program.

Target Group



Grupo Meta: FONAFIFO will prioritize PSA for women owners of forests and forest plantations

How?



Prioritization of PSA Women + 25 points to applications submitted by female owners.

Results



PAFT

18 créditos

US\$ 99.000



FONAFIFO a tu Lado

20 créditos

US\$ 107.000



PSA Mujer

82 contratos

3.959 has

US\$ 2.543.625

2020

INDER-CRÉDITO RURAL-CRÉDITO MUJERES - INDER

YEAR	CREDITS GRANTED	AMOUNT	LESS THAN 1 MILLION Aprox US\$1670		1.5 A 5 MILLONS Aprox US\$ 2500 - 8300		5.5 A 10 MILLONS 1/ Aprox US\$ 8300 - 16600		20.5 A 25 MILLONS Aprox US\$ 34160	
			QTy	AMOUNT	QTy	AMOUNT	QTy	AMOUNT	QTy	AMOUNT
2019	18	64.967.945	0	0,00	17	58.891.195	1	6.076.750	0	0,00
2020	1464	713.058.016	5	4.099.975	25	98.368.504	1433	586.589.537	1	24.000.000
TOTAL	1509	867.332.048	11	7.614.425,00	59	211.258.549	*1438	624.459.074	1	24.000.000

Lessons learned

- Rural women face major obstacles in accessing land titles and ownership.
- Gaps - coincide with rural women's needs to find financing.
- Sensitize governments - Financing, structural gaps limiting women's participation.
- Programs are promoting jobs, few rural economies.



Challenges

- Promote policies, initiatives, investments and incentives that benefit family productive units. GIGUP
- Promote diverse actions that respond to the activities prioritized by women.



Challenges

- Address priority gender considerations in the agroforestry sector and establish strategic alliances between different government institutions, NGOs and women's groups for their implementation.

- Promote access to fresh financial resources, including affirmative actions to enable participation. FOINDES - PAG REDD+.

- Collect baseline data to improve accountability - international and national commitments.



correo: mherrera@fonafifo.go.cr

México



Emilia Reyes

Director of Budgeting for
Equality and Sustainable
Development

NGO Gender, Labor, Citizenship
and Family Equity



Background

- The environmental emergency requires a comprehensive approach, including when it comes to its linkages with gender equality.
- The environmental emergency has gender-differentiated impacts on women and men due to the sexual division of labor.
- Women subsidize the entire economy due to the generation of unmonetized value through unpaid domestic and care work. All crises rest on this unpaid work of women, which increases structural gender inequality.
- No micro, national or regional action can solve the environmental emergency or gender inequality. Global and macro actions are required.



- There are measures that must be implemented urgently in order to make progress at the national and regional levels: the strengthening of the state, a radical commitment to the generation of social protection infrastructure and national care systems, as well as the consolidation of the public sector and the provision of quality public services guaranteeing human rights without discrimination of any kind.
- This implies guaranteeing fiscal space, implementing progressive tariff measures, and ensuring gender-sensitive spending. Moreover, it is necessary to cancel the debt of developing countries and reject the austerity measures that come with it.

Financing and equality

Conditions

- Sexual division of labor
- Geographic division of labor.
- Debt crisis and austerity. Debt and climate crisis. Micro-credits further indebt women in a global debt crisis.
- Micro proposals only reproduce women's exploitation.
- Reconceptualizing the global trade framework.

Measurements

- Strategic interests. Eradicate the sexual division of labor
- Progressive tariff measures. Regional fiscal body to avoid "race to the bottom".
- Cancel the debt of developing countries.
- Micro proposals only reproduce the exploitation of women.
- Where is the money and macro production? Gender must be mainstreamed there.
- Intellectual property exemption, vaccines. WTO.

Gender proposals

- Gender budgets are the most effective expenditure instrument to promote gender mainstreaming in the programmatic and budgetary pathways.
- They institutionalize differentiated measures and temporary special measures to reduce sectoral and structural gender gaps.
- In Mexico, an institutional infrastructure has been set up for the development of gender budgets, with different reference instruments that guarantee progress in fiscal matters.



- **Development of methodologies for gender analysis and budgeting since 2000.**
- **Trained the three levels of government and the three branches of government.**
- **The Gender into Urban Climate Change Initiative (GUCCI) promoted training in programmatic modification and budget analysis in two cities in Mexico: Tlaxcala and CDMX.**

key facts

- Equidad de Género joins GUCCI in 2016.
- Equidad de Género was the only organization that promoted gender budgets in the initiative.
- In 2016 Equidad analyzed regulatory and budgetary instruments at the federal, state and municipal levels concerning gender equality and climate change agendas.
- From 2017-2019, members of the sectors of gender equality, environment, civil protection, water and sanitation, finance, planning, among others, as well as civil society and academia, were trained.





Results

- Through methodologies for the analysis and development of programs and budgets with a gender perspective, we trained civil servants in two cities: Tlaxcala and CDMX.
- Advocacy in environmental programs and sectoral plans have integrated gender equality and non-discrimination language, also promoting differentiated actions.

Challenges

- In 2020 the modification of Annual Operational Programs was to be carried out, but the pandemic prevented this.
- Progress in training has been slower in 2020 and 2021, but we have made progress in specific revisions of programmatic instruments.



Lessons Learned

- The fiscal agenda always requires medium and long-term work. At the sub-state level there is no perception that their powers and mandate are directly articulated with international environment or gender equality instruments.
- Therefore, in addition to the programmatic and budgetary work, it is imperative to work on regulatory harmonization, both in the Legislative and within the institutions of the Executive.



COP25 CHILE 2019 | UN CLIMATE CHANGE CONFERENCE



POR UNA ACCIÓN CLIMÁTICA
CON IGUALDAD DE GÉNERO

Questions from the
audience



Funded by
the European Union



Financiado por
la Unión Europea



NACIONES UNIDAS
CHILE



THE GOVERNMENT
OF THE GRAND DUCHY OF LUXEMBOURG
Ministry of the Environment, Climate
and Sustainable Development



ENCUENTRO REGIONAL

CAMBIO CLIMÁTICO E IGUALDAD DE GÉNERO

Por una acción climática con igualdad de género



COP25 CHILE 2019 | UN CLIMATE CHANGE CONFERENCE



In order to advance in climate actions with gender equality, it is necessary to recognize the diversity of needs, interests and knowledge of Latin American and Caribbean women, especially those who live in more vulnerable conditions.



Funded by
the European Union



Financiado por
la Unión Europea



NACIONES UNIDAS
CHILE



THE GOVERNMENT
OF THE GRAND DUCHY OF LUXEMBOURG
Ministry of the Environment, Climate
and Sustainable Development